



THE SPECIAL RALLIART-SHOP-CONCEPT





Introduction

The Ralliart-Shop-Concept is especially designed for Ralliart and can be integrated easily in every Ralliart shop. The design is modern and the Ralliart customer will feel very comfortable with it. The showroom of the shop will look very generous and light will be shed on the Ralliart product line.

The concept of the furniture is very flexible although the system consists only of a few elements.

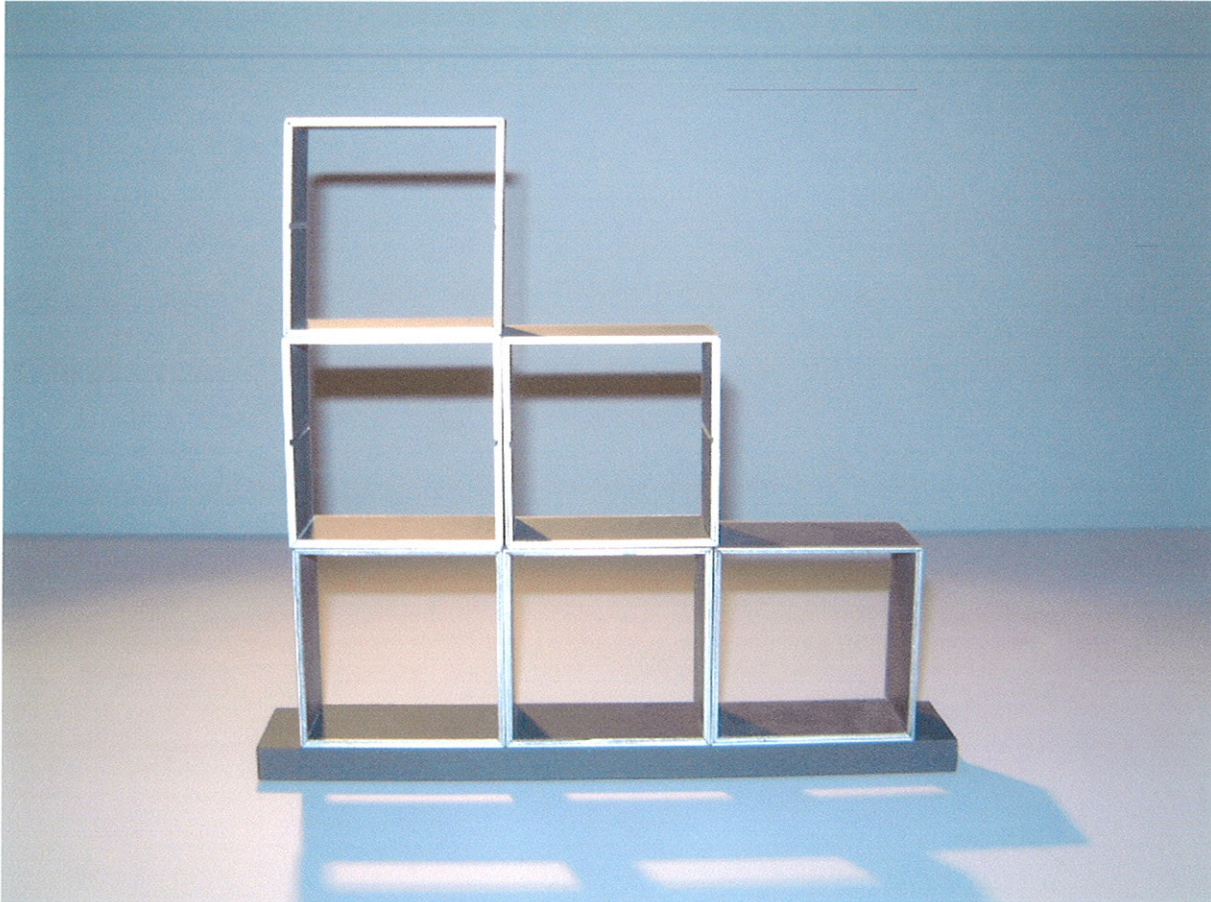
The basic colours are grey-black and silver with a touch of red.



The Ralliart shop furniture

1. Corpus with a base element or with a cupboard
2. Panel-System
3. Glass show-case
4. Desk

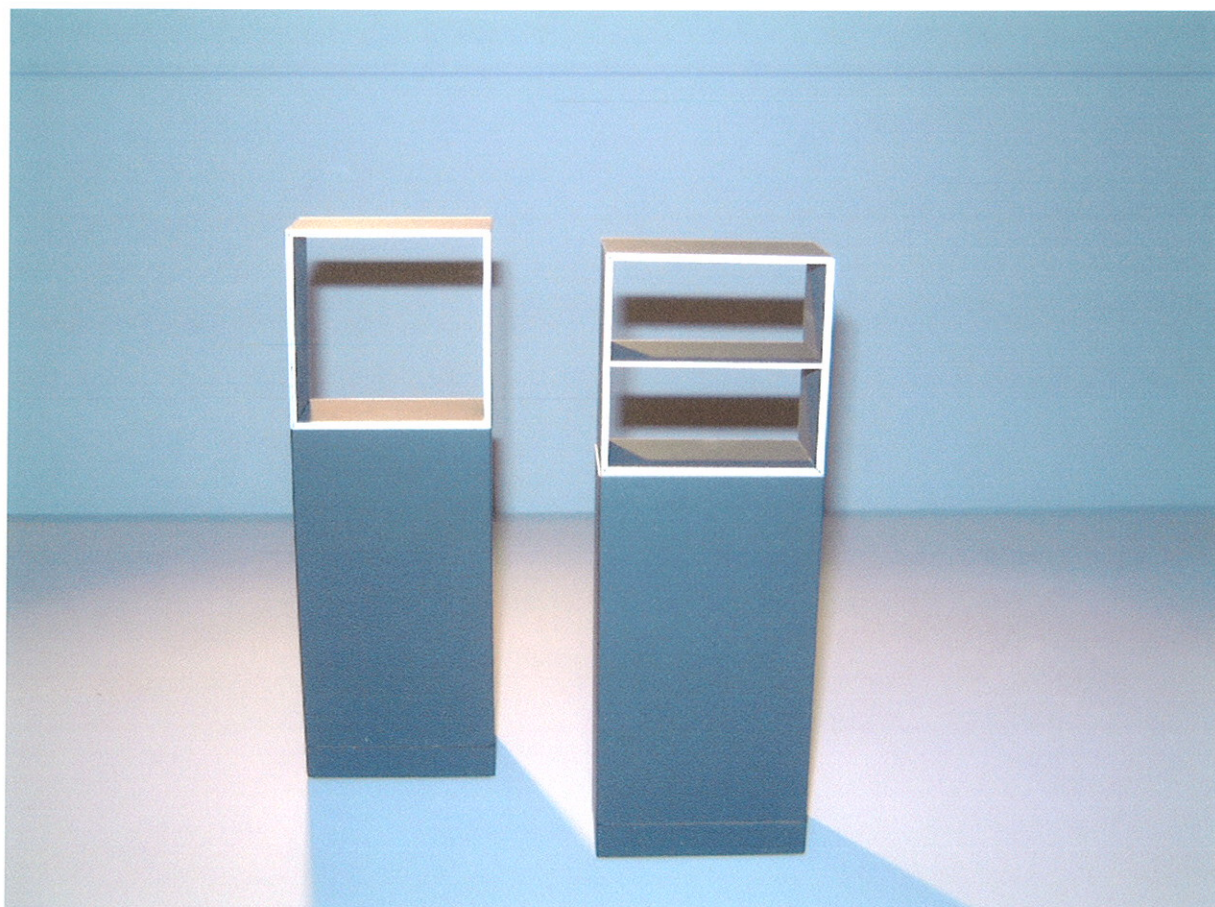
All panel features and corpus elements can be easily rebuild and attached without tools.



Corpus with base element

The corpus elements have aluminium ledge on the front- and back side. The ledges have integrated non visible magnets which are connecting the elements. Furthermore the elements can be closed with Plexiglas, also by magnets.

Size: 60 x 40 x 60 cm

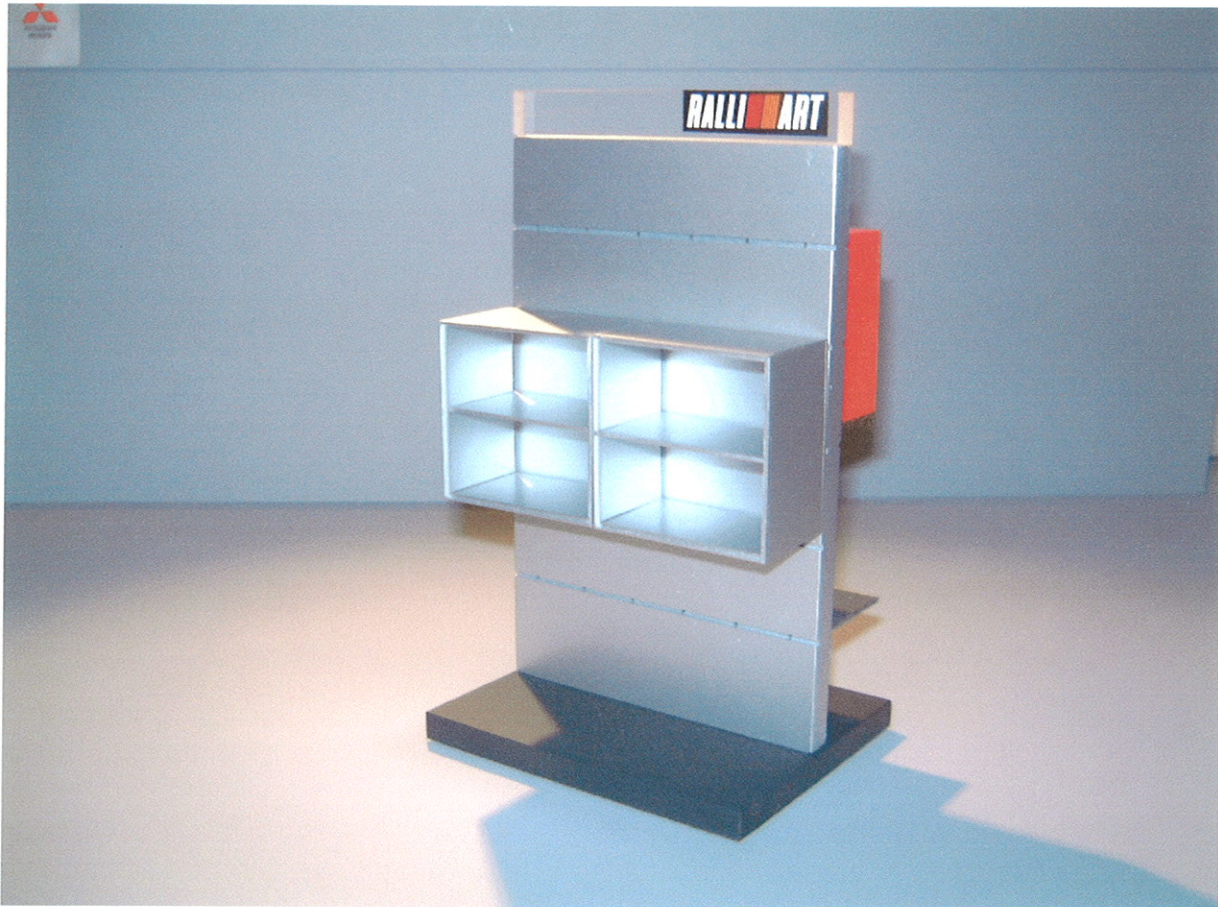


Corpus element with cupboard elements

The corpus elements can also be used on a cupboard element so that the Ralliart products are at eye level. The cupboard elements come without handles and can be easily opened sideways. Therefore the element looks like a podium rather than a cupboard.

Brochures can be stored in these elements for example.

Size: 60 x 40 x 120 cm

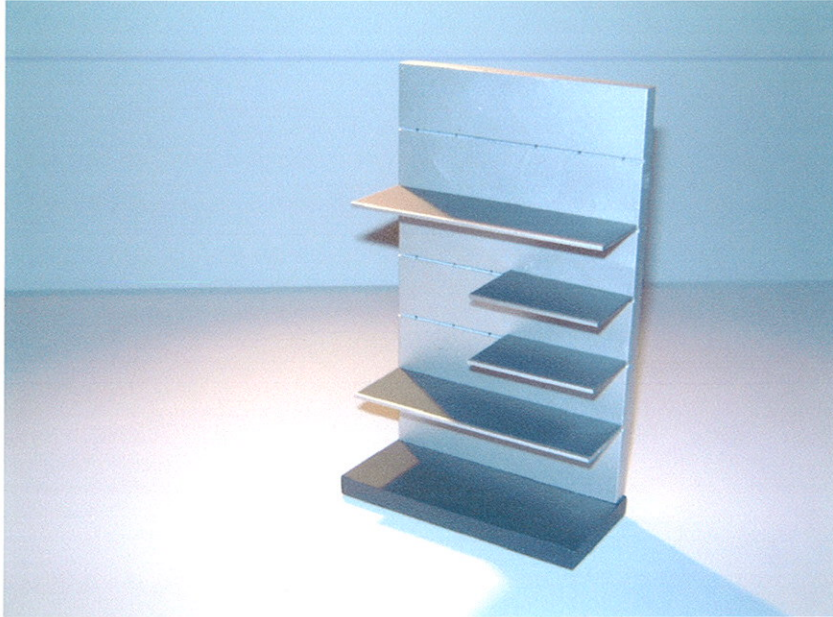


Panel system

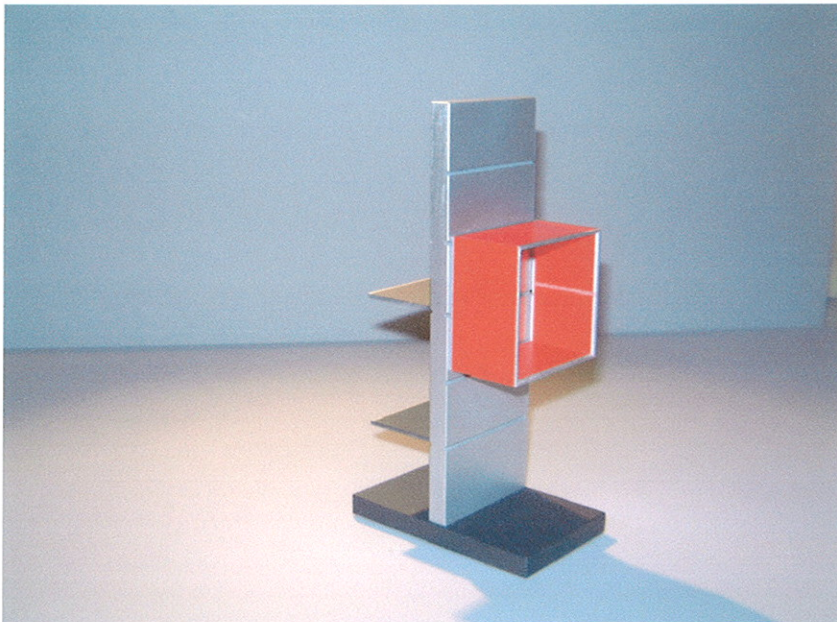
The panel system can be used from one side or double sided. In each position panels or corpus elements can be integrated in slots.

The base element is in line with the panel wall so that further panels can be attached.

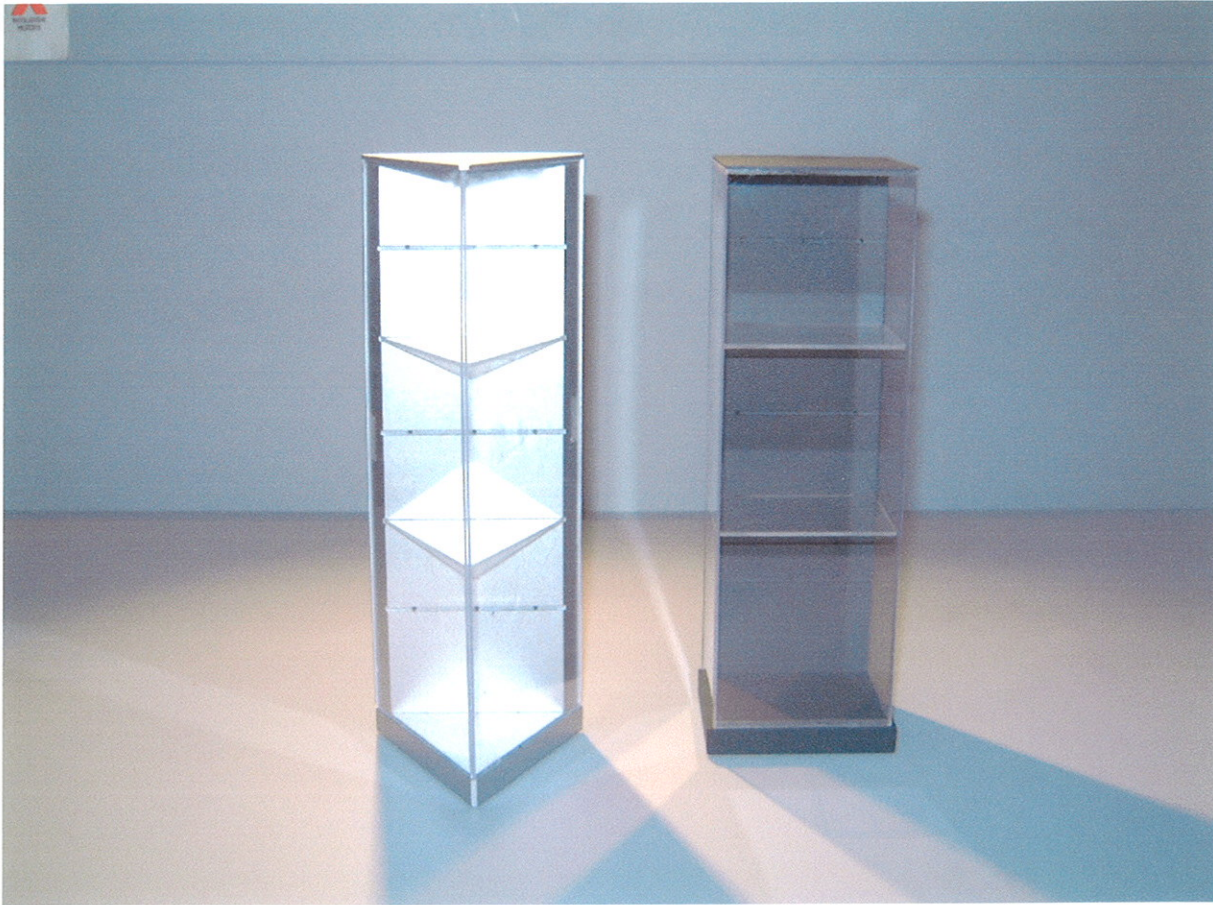
Size: 60 x 70/103 x 200 cm
120 x 70/130 x 200 cm



Panel system with shelves in different sizes and for various positions.
Size: 120 x 70 x 200 cm



The colour of the panel system is grey with a touch of red.
Size: 60 x 130 x 200 cm



Glass show-case

The triangle- or square glass show-cases might be used to highlight exclusive Ralliart products. An additional stress can be placed upon them by spotlights.

Size: 60 x 60 x 200 cm (square body)
 70 x 60 x 200 cm (triangle body)



MITSUBISHI MOTORS

RALLIART



Desk

To complete the special Ralliart-Shop-Concept this table fits it fine with the rest of the furniture with the new design.

The functional component of this table of the storage possibilities for both sides: the customers and the accountant.

Size: 200 x 90 x 75 cm



MITSUBISHI MOTORS



Contact

Ralliart GmbH
Adam – Opel – Strasse 4
D – 65468 Trebur

Uwe Sagurna
Tel. +49 (0) 6147 – 203 – 111
Fax +49 (0) 6147 – 203 – 119
E – mail: uwe.sagurna@ralliart.de

Burkhard Wendel
Tel. +49 (0) 6147 – 203 – 230
Fax +49 (0) 6147 – 203 – 229
E – mail: burkhard.wendel@ralliart.de

Produktdesigner

Carsten Thylmann, Jürgen Greubel